



Decide with Confidence

GORMAN MANUFACTURING COMPANY, INC.

D-U-N-S® 80-473-5132 Headquarters Phone 650 555-0000
492 Koller Street,
San Francisco, CA 94110

Payment Profile Report

Purchase Date: 02/20/2012
Last Update Date: 01/11/2013
Attention: customerRefText

Executive Summary

Company Info

Year Started	1985	Do not confuse with	other Gorman companies, this is a fictitious company used by D&B for demonstration purposes
Control Year	1985		
Employees	125		
Employees Here	110 at this location	Sales (Financial Statement)	\$19,465,134
Working Capital	\$1,222,299	Net Worth (Financial Statement)	1,180,200

As of 12/31/2012

D&B PAYDEX®

Up to 24 month D&B PAYDEX



Up to 3 month D&B PAYDEX



Credit Limit Recommendation

Risk Category



Indicators

Public Filings Summary

The following data includes both open and closed filings found in D&B's database on this company

Record Type	No. of Records
Judgment	3
Lien	4
Suit	0
UCC	4

Public Filings



Bankruptcy Judgment * Lien * Suit UCC

Advanced Paydex + CLR

D&B PAYDEX®



Decide with Confidence

Shows the D&B PAYDEX scores as calculated up to 3 months and up to 24 months of payment experiences.

Up to 3 month D&B PAYDEX



When weighted by dollar amount, payments to suppliers average 36 Days Beyond Terms. Based on payments collected over last 3 months.

Up to 24 month D&B PAYDEX



When weighted by dollar amount, payments to suppliers average 19 days beyond terms. Based on payments collected up to 24 months.

When weighted by dollar amount, the industry average is 5 DAYS BEYOND terms.

- High risk of late payment (average 30 to 120 days beyond terms)
- Medium risk of late payment (average 30 days or less beyond terms)
- Low risk of late payment (average prompt to 30+ days sooner)

Payment Trend	unchanged *	Total Payment Experiences for the HQ	14	Highest Now Owing	\$75,000
Payments Within Terms	80%	Total Placed for Collection	0	Highest Past Due	\$10,000
Average High Credit	\$11,070	Largest High Credit	\$95,000		

* compared to payments three months ago

Credit Limit Recommendation

Risk Category



Recommendation Date

03/26/2013

Key Factor

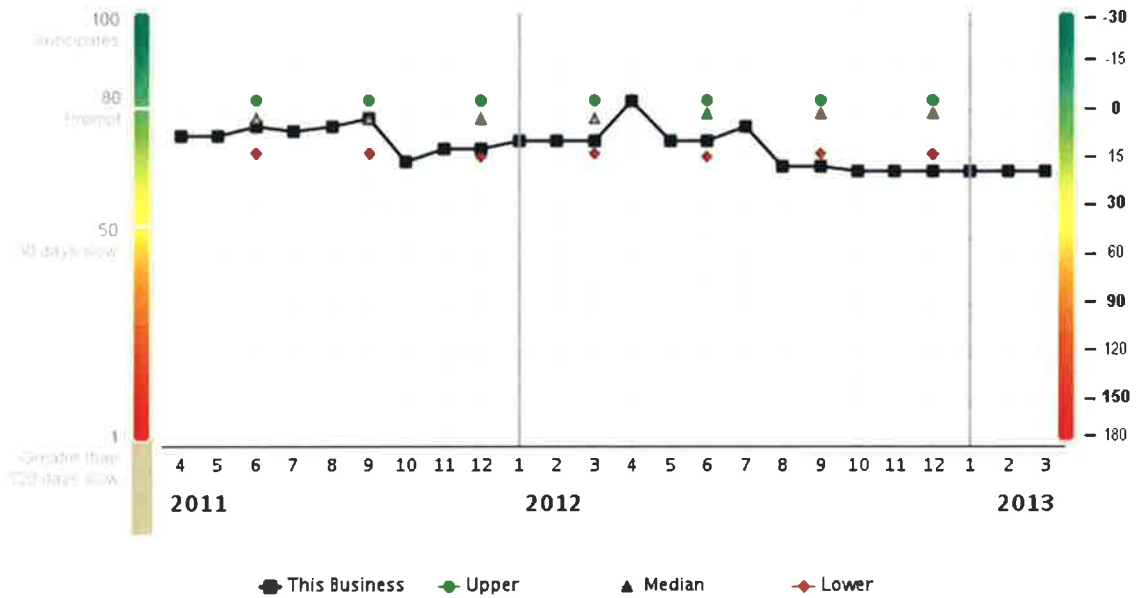
Risk is assessed using D&B's scoring methodology and is one factor used to create the recommended limits

PAYDEX Yearly Trend

Shows PAYDEX scores of this Business compared to the Primary Industry from each of the last four quarters. The Primary Industry is Lithographic commercial printing, based on SIC code 2752.



Decide with Confidence



This Business	72	72	74	73	74	76	66	69	69	71	71	71	80	71	71	74	65	65	64	64	64	64	64	64
Industry Quartiles																								
Upper			80		80			80				80				80					80			
Median			76		76			76				76				77					77			
Lower			68		68			67				68				67					68			

Note

- Current PAYDEX[®] for this Business is 64, or equal to 19 days beyond terms.
- The 24 month high paydex is 80.0, or equal to GENERALLY WITHIN terms.
- The 24 month low paydex is 64.0, or equal to 19 DAYS BEYOND terms.
- Industry upper quartile represents the performance of the payers in the 75th percentile.
- Industry lower quartile represents the performance of the payers in the 25th percentile.

Payment Habits

Credit Extended	% of Payments Within Terms	No. of Payment Experiences	Total Amount USD
Over \$100,000	0%	0	\$0
50,000-100,000	50%	1	95,000
15,000-49,999	100%	1	15,000
5,000-14,999	75%	3	20,000
1,000-4,999	100%	1	1,000
Under 1,000	99%	6	1,850

Based on up to 24 months of payments

Payment Summary

The Payment Summary section reflects payment information in D&B's file as of the date of this report.

There are 14 payment experiences in D&B's file, with 3 experiences reported during the last three month period. The highest Now Owes on file is \$75,000. The highest Past Due on file is \$10,000.

All Industries



Decide with Confidence

Industries	Total Received	Total Amounts	Largest High Credit	Within Terms (%)	Days Slow (%)			
					0-30	31-60	61-90	90+
Misc computer service	4	\$600	\$250	96	0	0	4	0
Short-trm busn credit	2	95,750	95,000	50	0	50	0	0
Nonclassified	2	15,000	10,000	83	17	0	0	0
Ret rec. vehicles	2	1,500	1,000	100	0	0	0	0
Mfg home furniture	1	15,000	15,000	100	0	0	0	0
Ret mail-order house	1	5,000	5,000	50	50	0	0	0

Other Payment Categories

Category	Total Received	Total Dollar Amounts	Largest High Credit
Cash experiences	1	\$0	\$0
Payment record unknown	0	0	0
Unfavorable comments	1	1,000	1,000
Placed for Collection	0	0	0

Detailed Payment History

Date Reported	Paying Record	High Credit	Now Owes	Past Due	Selling Terms	Last Sale within(months)
February 2013	(001)Unsatisfactory	\$1,000	\$1,000	\$1,000	N/A	
January 2013	Ppt	1,000	0	0	N/A	6-12
	Ppt	500	0	0	N/A	6-12
September 2012	Ppt	750	0	0	N/A	6-12
August 2012	Ppt	15,000	0	0	N/A	1
	Ppt-Slow 10	5,000	250	0	N/A	
	Ppt-Slow 60	95,000	75,000	5,000	N/A	1
July 2012	Ppt	10,000	10,000	10,000	E.O.M	4-5
	Ppt	250	250	0	N/A	1
	Ppt	250	250	0	N/A	1
	Ppt	50	50	0	N/A	1
	Ppt-Slow	5,000	5,000	5,000	N30	2-3
	Ppt-Slow 90	50	50	50	N/A	1
December 2011	(014)Cash own option	0	0	0	N/A	4-5

Lines shown in red are 30 or more days beyond terms

Each experience shown is from a separate supplier. Updated trade experiences replace those previously reported.